



Solutions
Recovery
International

STATEMENT OF QUALIFICATIONS



1900 Camden Avenue

San Jose, Ca. 95125

Phone: (408) 250-2558

www.solutionsrecovery.com



STATEMENT OF QUALIFICATIONS



Solutions Recovery International (SRI) founded in 2002, provides public and private clients with specialized products, general and environmental engineering, construction and construction management services.

SRI with its team of 16 talented and experienced engineers, scientists and project managers offers solutions to complex projects. Our team includes registered architects, engineers, and scientists specialized in facility design, process development, and construction management.

SRI also provides a full line of municipal and industrial treatment systems. For our industrial clients SRI offers wastewater treatment and recycling system to achieve “Zero Discharge”.

Supporting clients in Semiconductor, Printed Circuit Boards and Plating industries SRI has established a strong reputation for delivering sound solutions and superior service.

SRI is a self certified “*Small Business*” providing the following services:

- Science Park Design
- Facility Due Diligence
- Facility Design
- Permitting
- CCR, Title 22 Certification
- Process Development
- Water & Wastewater Treatment & Recycling Systems
- Environmental Engineering
- EHS Training
- Facility Closure

Visit our website at www.solutionsrecovery.com for more information on our products and services.



FACILITY DESIGN

SRI provides full architectural and engineering services to its industrial clients. Our team is expert in code interpretation and translating them into innovative solutions to lower construction costs.

SRI's team also provides value engineering services to lower construction costs. This methodology includes:

- Streamlining complex designs, systems, and processes
- Utilizing Kaizen principles in design
- Establishing clearly defined requirements
- Simplifying labor intensive projects, processes, and systems
- Adapting processes for multiple applications
- Failure Analysis to eliminate facility shutdown

Followings are representative samples of some of the projects we have completed:

Episil, Shanghai, China

Provided a full facility design and specifications package for this semiconductor manufacturing facility, including industrial design, all support processes and systems.

BiCMOSS Foundry, Santa Clara, Ca. USA.

Provided design and permitting package for installing a Novellus and MRC tools, including toxic gas process piping, collection and treatment and tool seismic anchoring.

DOMO PCB, Mountain View, Ca. USA.

Provided the facility design and permitting package for this Printed Circuit board manufacturing facility. Interface with city officials and obtained the permit in 3 weeks.

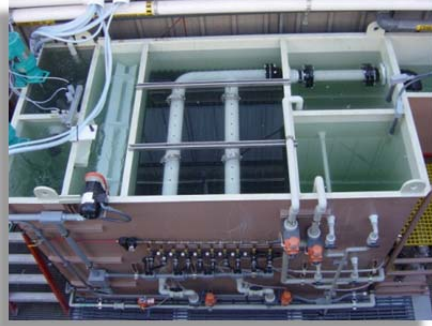
TTM Technologies, Santa Clara, Ca. USA.

Provided design services to convert approximately 2000 ft² of mixed to H4 occupancy to house an automated copper plating line with a new 1600 Amp power in 2013. Again we provided design services for installation of two more plating lines in 2016.





WASTEWATER TREATMENT SYSTEMS



We have successfully designed and constructed over 200 industrial and municipal water and waste treatment facilities, accounting well over \$500 Million, ten of which received statewide "Best Plant of the Year" awards from the California Water Pollution Control Association. Followings are representatives of these projects:

➤ *Yates Petroleum Corporation, Gillette, Wyoming*

Designed and build 1.3 MGD treatment plant utilizing ion exchange technology treating Coal Bed Methane produced wastewater in Wyoming. This contract included building roads, lined ponds, pads, building and lighting as well as obtaining permits from all agencies.

➤ *Hyundai Electronics, San Jose, California*

Designed and built complete wastewater treatment systems including 700 GPM neutralization, 240 GPM heavy metal removal, 3000-gallon batch and the chemical distribution systems. This project was completed in record time and was nominated as "Meeting the Challenge of Difficult Job" at Builder's magazine by the GCA.

➤ *Lemoore Navy Air Base, Lemoore, California*

Engineering Design and Construction Inspection for an Oil, Heavy Metals and Organic Removal from wastewater generated at the Lemoore Navy Base.

➤ *JDS Uniphase, San Jose and Milpitas California*

Numerous projects including a Turnkey operation for an Arsenic and Fluoride removal systems, CCR Title 22 Certification, Secondary Containment and monthly service contract.

➤ *Cherry Aerospace Fasteners, Santa Ana, California*

Numerous turnkey projects including Heavy Metal/Cyanide wastewater treatment and recycling and Batch treatment systems for the ion exchange regeneration wastewater.

"Overall, SRI's team is a very conscientious and a valuable member of our environmental team. I believe they were one of the most capable consultant and supplier I've had the pleasure to work with and would strongly recommend them to any company looking to implement a wastewater treatment and recycling projects."

Cherry Aerospace Fasteners.





WASTEWATER TREATMENT SYSTEMS



➤ *Veteran Administration, Taiwan, ROC*

Completed over 30 municipal wastewater treatment systems, which included process design, construction drawings and specifications, construction inspection, equipment procurement, fabrication, start-up and training. These plants were serving hospitals housing 500 to 4000 veterans (100,000 to 1.3 million gallon per day).

➤ *Disktec, Santiago, Chili*

A turnkey project including, designed, equipment fabricated and installation of a wastewater treatment system for this hard disc manufacturing facility.



➤ *SMIC, Shanghai, China*

Provided design and equipment fabrication of an Ammonia Removal System for this Semiconductor foundry facility.

➤ *Alta Devices, Sunnyvale, California*



Provided design, specification, permitting, fabrication, manufacturing, installation and certification of wastewater treatment systems for this solar cell manufacturing facility. The treatment included wastewater equalization, pump stations, microfiltration and sludge processing systems.

➤ *Hilmar Community Services District, Hilmar, CA*



The Hilmar WWT plant has operated since 2004 without accumulating or removing sludge, and Hilmar residents enjoy some of the lowest rates in the state of California. This facility's design includes some of the latest improvements to the Advanced Integrated Pond Systems approach, affording greater energy efficiency and superior process control.



FACILITY CLOSURE

SRI provided facility closure services for number of facilities in California, which included preparation of the closure plan and its submittal to the regulatory agencies, oversight of equipment and facility decontamination, sells or disposal of the old equipment, and soil sampling, soil decontamination and subsequent reporting.

Following are a representative list of our closure experience:

Boeing/NASA Shuttle Program, Palmdale, California

Boeing facility in Palmdale was responsible for maintaining the Shuttle after its return from space. When this program came to sunset, Boeing closed that operation in 2010, which included equipment decontamination and removal, and bringing the site to its original state. SRI performed this closure within schedule and under budget.

Kobe Precision, Inc, Hayward California

This facility was providing wafer reclamation processes to the semiconductor industry. This facility had over 200 different equipment operating with different chemicals. The final report brought praise from the regulator agency and completed within schedule and budget.

A-1 Plating, Santa Clara, California

Two plating facilities with plating equipment and wastewater treatment systems were involved in this closure. Soil sample collection revealed extensive soil contamination that required soil excavation with confirmation sampling and subsequent reporting.

Solyndra, Fremont, California

SRI assisted in closure process for all utilities for this solar manufacturing facility.

Westak, Sunnyvale, California

SRI provided a full service closure for this PCB manufacturing facility in record time.

*“The closure was completed in **exemplary fashion** and documentation of the closure by Solutions Recovery International was **excellent**”.*

Hayward Fire Department





TANKS CERTIFICATION

California Code of Regulations (CCR) Title 22 Certifications

SRI provides Tank Certification services under Title 22 of the (CCR), Division 4.5, Chapter 45 (22 CCR §67450, §§66264.175(c) and 66264.193). Followings are a short list of our clients:

*“I highly recommend SRI to companies that are looking for honest and professional services for environmental engineering and wastewater treatment systems.”
Altaflex, Inc.*

- ❖ *Boeing facilities at Long Beach, Huntington Beach and Palmdale Ca.;*
- ❖ *Applied Material Building 15, Santa Clara, Ca.*
- ❖ *Western Digital, Fremont, Ca.*
- ❖ *Novellus Systems, Inc. San Jose Ca.;*
- ❖ *Spectrolab, A Boeing Company, Sylmar, Ca.*
- ❖ *Altaflex, Inc (A PCB manufacturer), Santa Clara, Ca.;*
- ❖ *Brush Wellman Engineered Material, Fremont,*
- ❖ *Palo Alto Research Center (PARC), Palo Alto, Ca.*
- ❖ *JDS Uniphase; San Jose, Ca.*
- ❖ *Alta Devices, Santa Clara, Ca*
- ❖ *Advanced Printed Circuits Technology, Santa Clara, Ca*
- ❖ *Evenstar Printed Circuits Board, Santa Clara, Ca*
- ❖ *Prodigy Printed Circuits Board, Santa Clara, Ca*
- ❖ *QualTech Circuits, Santa Clara, Ca*
- ❖ *Integrated Materials, Inc. Sunnyvale Ca.*
- ❖ *Cobham (MA-COM), San Jose, Ca.*
- ❖ *dpix, Palo Alto, Ca.*
- ❖ *WIT Refinery, San Jose, Ca.*



KAIZAN EXPERIENCE

NUMMI – Fremont, California

Our team provided a series of Jishuken activities (Concentrated Kaizen) to deliver parts to NUMMI on a JIT (Just In Time) basis. Sequencing parts in the exact order that NUMMI would order enabled us to produce a complete car set of interior door panels, map pockets and other accessories in 53-seconds/car (Takt Time=53 seconds). As a result of having done this, we were able to reduce the FGI (Finished Goods Inventory) from 4 days to 2 hours and eventually to Zero! Simultaneously, the Quality was improved tremendously from 1300 DPPM to 12 and eventually to Zero Defects (ZD) for 13 consecutive months!

As a result of this Jishuken and other similar Kaizen projects, the productivity improved by 38%, a 100% on-time delivery was achieved and inventory turns improved many folds!

Applied Material – Santa Clara, California

Our team trained the production of this Semiconductor giant in lean manufacturing and in less than 3 months, under Kaizen program they had increased their production by 10% while keeping their overhead the same.

Altera – San Jose, California

Our team did a couple of 6-phase Problem-Solving workshop at Altera, where major problems were resolved, by identifying the root causes and devising correct and effective countermeasures! This semiconductor facility was able to improve its quality by more than 15% in less than 6-months!

Morgan Ceramic – Hayward, California

Our team provided an onsite manager to develop and implement a full Kaizen program to increase profitability through strategic planning (Hoshin-Kanri), Standardization, JIT and Heijunka.

Armanino – San Francisco, California

Armanino is an accounting firm that was looking for a way to reduce its lead time and increase the profit. Our team implemented the Toyota Production System for this accounting firm. Their overall lead time was reduced by 30% and profitability was increased by 25% within a 1 year.

Vinotheque – Stockton, California

Vinotheque is a manufacturer of Wine Cellars in Stockton, California. Our project there was to identify and calculate their (TT) Takt Time(s), Standardize their processes, reduce all (CT) Cycle Times and adjusting the CT with the pertinent TT, while improving the Quality and holding the overhead constant! This, along with major layout change and implementing new inventory management program, made the desired results possible. We removed more than 30% of Muda from the Gemba!